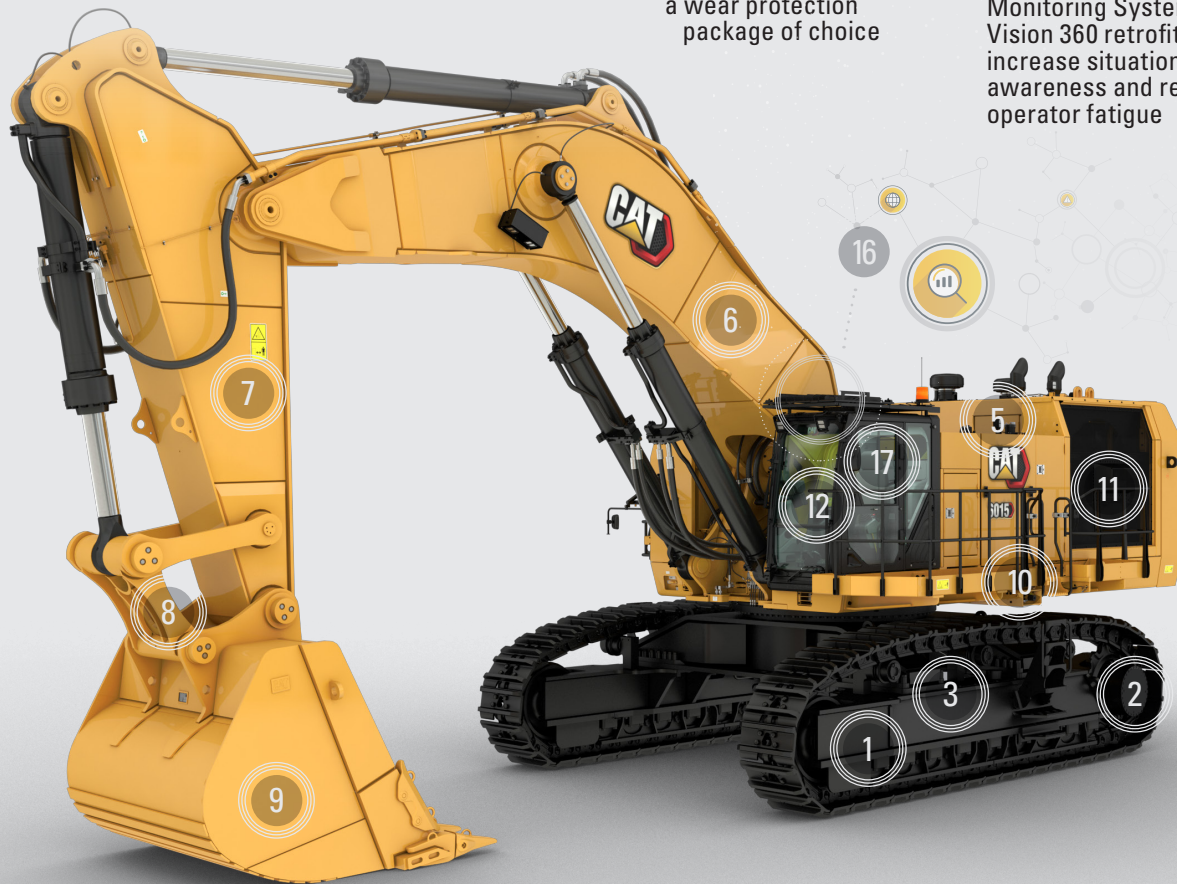
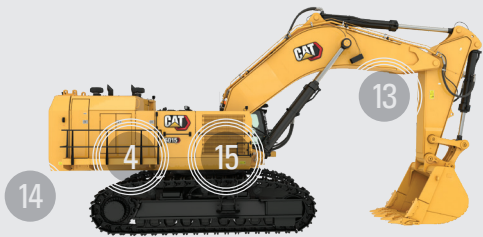


THE NEW CAT® 6015
HYDRAULIC MINING
SHOVEL (HRC VERSION)

**MORE TIME
TO LOAD MORE.**



1. Robust carbody and crawler frames with Cat® HD undercarriage, HD rollers, HD idlers, HD track, and track tensioning
2. Strengthened and heavy-duty final drive, with improved serviceability (retrofitable)
3. New HD undercarriage protection package (retrofitable)
4. Durable superstructure
5. Updated product identity, including nomenclature change to 6015
6. Durable boom with energy efficient boom lowering float valves
7. Robust stick design
8. New bucket linkage design prevents travel over center and improves kinematic balance
9. Productive and durable buckets equipped with a wear protection package of choice
10. Safe access and egress with powered 45° access stairway insert (optional)
11. New engine module with Cat C27 engine and non-DEF aftertreatment solution, optimized hydraulics, and hose routing (meets U.S. EPA Tier 4 Final / EU Stage V emissions)
12. Comfortable and productive operator's cab with large, color touchscreen and HVAC
13. LED high-brightness working and service lights
14. Easily accessible ground level service station
15. Oil cooler module with fully independent oil cooling system
16. Connects to Cat MineStar™ Solutions with new Product Link™ Elite
17. Optional Camera Monitoring System or Vision 360 retrofit kit increase situational awareness and reduce operator fatigue

THE NEW CAT® 6015 HYDRAULIC MINING SHOVEL (HRC VERSION)



824 hp / 615 kW
ENGINE OUTPUT

BACKHOE: 16.1 t / 14.6 mt
BUCKET PAYLOAD

BACKHOE: 154 t / 140 mt
OPERATING WEIGHT



CAB

- » Excellent visibility with unobstructed view of digging environment and upward view through skylight.
- » Comfortable and productive operator environment with heated, pneumatically-cushioned and multi-adjustable comfort seat.
- » Independently adjustable joystick consoles.
- » Joystick controls alternate patterns as standard.
- » Pressurized cab with positive filtration.
- » Optional Camera Monitoring System or Vision 360 Retrofit Kit.
- » Superior insulation for reduced noise and temperature control.

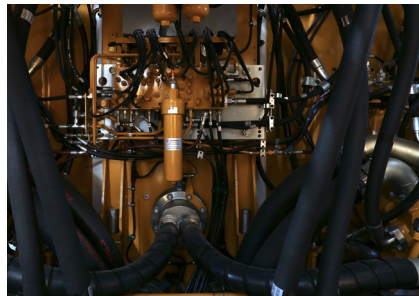


SAFETY

- » Improve operator protection with protective guards on the top of the cab and the optional front guard.
- » Anti-slip walkways and optional 45-degree stairway allow for safe access and egress.
- » Safety glass in all windows protects operator.
- » Five emergency shut-off switches, with one easily accessible in the cab to shut down the electrical system in case of emergencies.
- » Support sustainable development goals with optional Cat Bio Hydro Advanced hydraulic fluid.

SERVICEABILITY

- » Diagnose and execute maintenance more effectively with Cat Electronic Technician (ET).
- » Inspect, maintain, and repair the 6015 more easily with improved service documentation, new visual inspection ports and commonization of accumulator charging ports and tools.
- » Reduce downtime with enhanced warning levels for hydraulic oil temperature and improved data link diagnostics including new pilot pressure monitoring via ET.
- » Ground level service station provides easy access to fast-fill diesel fuel and grease connections.
- » HRC engines eliminate the need for DEF, saving time and cost during maintenance.
- » Enable collection and transmission of machine data with and the new Product Link Elite technology.
- » Experience maintenance free Positive Pin Retention tracks that are specially machined to extend internal pin/bushing wear life and fatigue resistance.



ENGINES

- » Boost productivity with a durable and reliable C27 engine, certified to meet U.S. EPA Tier 4 Final and EU Stage V.
- » Keep engine and pumps running at optimum speeds with Load Enhanced Anticipatory Control (LEAC).

